



# Your Official Guide to Whitman College

It all starts here 

# So ... what makes a Whittie?\*

Let's start with how they are alike: **Smarts and drive.**  
A track record of hard work. A desire to learn, think  
and create in service to a better world.

Yet it is their differences—remarkable, diverse and interesting—  
that fuel a culture of expression, empathy and respectful exchange.

*That's what makes a whittie.*

*That's what you'll find at Whitman.*

**1,500+**

students

**45+**

states

**70+**

countries &  
sovereign nations



## One happy place!

"Most Loved Colleges," "Great Quality of Life,"  
"Great Classroom Experience," "Great Professors,"  
"Great Professor Accessibility," "Great College Library,"  
"Great Health Services," "Great Intramural Sports"

—The Princeton Review,  
"Great Colleges" list

\*Whittie: a friendly and familiar way to refer to Whitman students and alumni.



**ON THE FLIP SIDE**  
**The Official Guide**


Turn this book over to see the Whitman experience from our students' point of view.



Find Your  
Focus

Be challenged in the most amazing ways and have learning experiences that change you forever.





# It's your unique journey

You'll take your own path here.

You may know just what you want to do in college and with your life—  
or have no idea. ← *That's OK!*

At Whitman, you'll have the chance to explore it all—from politics to  
environmental studies and computer science to film and media studies.  
Whether you're exploring artificial intelligence, art history, economics or our  
place in the universe, you can find what speaks to you here.



## Gold standard

**98% of graduates** of the last decade rank their academic  
experience at Whitman as excellent or very good.





## Experience a different kind of academic rigor

Our talented students are among the best in the nation—driven, yes, and also curious, creative and compassionate.

You'll dive deep into your academic major—and still have the time and chance to explore other cool pursuits, ranging from clubs to causes to local culture.

### At Whitman:

- You'll be challenged and supported.
- Your classmates will become research partners, allies, teammates, best friends and your support system.
- You'll do research alongside your professors.

*You'll collaborate instead of compete.*







“

*Growing up in the Silicon Valley taught me to believe that being hypercompetitive with your peers was healthy and that test scores and grades defined you. On my visit to Whitman, I realized that does not have to be the case. Whitman students, staff and faculty are all incredibly welcoming, supportive and kind.”*

—**Quinne W.**, Economics major



### **College vs. university?**

As a four-year college, undergrads are it at Whitman! Professors will teach your classes. You won't compete with grad students for research opportunities or time with faculty. You'll leave Whitman with unique undergrad experiences that would be rare at large institutions.



## Teacher. Scholar. Mentor. Guide.

Whitman professors are accomplished but also accessible. Prominent but decidedly down-to-earth.

At Whitman, you won't just be a number. Your professors will know you by name and be invested in your success—in and out of the classroom—from spending hours in the lab together to attending your violin recital or meeting you for coffee.

**9:1**

student-to-faculty ratio

**17**

average class size



### You'll love going to class!

The Princeton Review consistently puts Whitman on its top lists for **"Most Accessible Professors"** and **"Best Classroom Experience."**

# Where you'll truly become a college student

A place to think more critically. Become a stronger writer. Discuss topics respectfully and productively.

In our First Year Seminars, we're going to ask you to think deeply. To consider tough questions—and learn to ask them too. Your seminar course will be one of the first academic spaces where you'll closely connect with professors, get to know your classmates and gain valuable skills that you'll need to succeed in college and life.

## SEMESTER 1 Exploring Complex Questions

In the fall you'll take **Exploring Complex Questions**—where you'll be part of a learning community led by a team of faculty.

Fascinating topics you might explore with your professors and classmates:

**The Body:** What is the body? How is the body a site of past experience?

**Climate:** Where are we now at this moment of the climate crisis? How did we get here?

**Games:** In what ways can a game be considered art? What can games teach us about morality?

**Storytelling:** What does it mean to tell a story? How can technology help us tell more inclusive and creative stories?

**Time:** What is time and how do humans experience it? How do we perceive it, measure it, record it and organize it?

## SEMESTER 2 Making Powerful Arguments

In the spring, you'll move into a new seminar class with new classmates. In **Making Powerful Arguments**, you'll get stronger at writing and speaking persuasively, with the support of rigorous, research-based evidence.

You get to choose a course that interests you and participate in thought-provoking debates guided by our expert faculty.



## What is a seminar?

The word "seminar" owes its conceptual foundation to medieval seed-plots. Just as with our First Year Seminars, the seed-plot offered a space for growing, flourishing and developing the strength to weather transplantation in the wider world to become strong and productive.



# Possibilities. Potential. Promising futures.

No pressure to decide ... but if you're wondering what you might pursue, here's a menu for you.

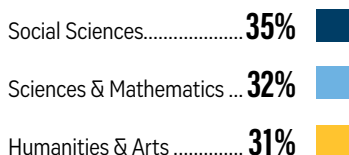
## Unique @ Whitman

### What is BBMB? We're glad you asked!

Interested in pre-med or careers in medical research, biotechnology or public health? If yes, then BBMB is for you! Students study biological molecules in-depth—everything from structure and function to interactions within a cell. You'll take classes in Chemistry, Biology and Physics and have the opportunity to pursue research internships at distinguished institutions like the Mayo Clinic.

### Protect the planet with your passion & expertise

Whitman offers 11 combined majors in Environmental Studies—take your academic interest and pair it with expertise for a better future.



### MAJORS & MINORS

- Anthropology
- Art
- Art History
- Astronomy
- Biochemistry, Biophysics & Molecular Biology\*
- Biology
- Chemistry
- Chinese
- Classical Studies\* (2 majors)
- Classics
- Computer Science
- Economics
- English
- Environmental Studies (ES)
- New!** Ethics & Society
- Film & Media Studies
- French & Francophone Studies
- Gender Studies
- Geology
- German Studies
- Hispanic Studies
- History (6 majors)
- Indigeneity, Race & Ethnicity Studies
- Japanese
- Mathematics
- Music (7 majors)

### **New!** Neuroscience (Brain, Behavior & Cognition)\*

- Philosophy\*
- Physics
- Politics
- Psychology
- Religion
- Rhetoric, Writing & Public Discourse
- Sociology
- South Asian & Middle Eastern Studies\*
- Theater

### COMBINED MAJORS\*

- Astronomy-Geology
- Biology-Geology
- Chemistry-Geology
- Economics-Mathematics
- Geology-Computer Science
- Geology-Physics
- Mathematics-Physics
- Mathematics-Statistics
- Physics-Astronomy

### Majors Plus French

- Biology+French
- Geology+French
- Psychology+French
- Religion+French
- Sociology+French

### Combined Majors in Environmental Studies

- Environmental Humanities
- Anthropology-ES
- Art-ES
- Biology-ES
- Chemistry-ES
- Economics-ES
- Geology-ES
- History-ES
- Physics-ES
- Politics-ES
- Sociology-ES



\*Major only, not offered as a minor



## Major or minor: What's the difference?

**Major:** Primary area or dual area of study directly related to your intended career or industry.

**Minor:** Alternate area of study which allows you to explore personal interests or adds value to your major. It can be related to your major or be completely different.

### ADDITIONAL MINORS

- Creative Writing
- Dance
- Data Science
- New!** Finance
- Global Literatures
- Latin American Studies

### CONCENTRATIONS

- Global Studies
- New!** Human-Centered Design

### OTHER PROGRAMS

- Pre-Health
- Pre-Law

### COMBINED PLANS/ DUAL-DEGREE PROGRAMS

These unique programs offer three years of study at Whitman, followed by two years at partner institutions.

**Engineering** → *CalTech, Columbia University, University of Washington or Washington University (St. Louis)*

**Forestry & Environmental Management** → *Duke University*

**Oceanography** → *University of Washington*

Worth a look ...  
earn two degrees!

# 6 in 10

graduates of the last decade have completed or were completing an advanced degree.

Top grad schools  
love whitman



Browse  
Whitman's  
majors &  
programs





## Unique @ Whitman

### Whitman Undergraduate Conference

Not only will you do research, you'll get practice presenting your knowledge and findings. Each spring, the Whitman Undergraduate Conference showcases work sparked by student-faculty research, course study, senior theses, independent projects, fellowships, internships and study abroad experiences.\*

*\*No classes are held that day so everyone can attend.*

## STUDENT-FACULTY RESEARCH

# Do work that matters

When great learning happens outside the classroom.



At Whitman, you'll learn from and work closely with your professors—all of them dedicated to teaching and furthering their areas of expertise.

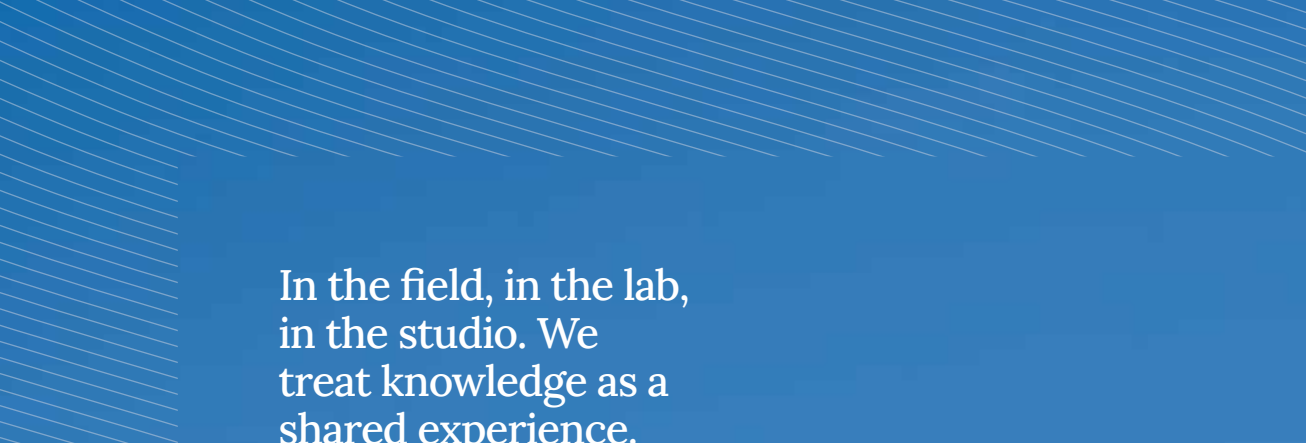
Many Whitties, across majors, work side by side with faculty in labs and on research projects. They publish in journals, present at national conferences and build professional networks—before they even graduate.

*Pro experience,  
even as an  
undergrad!*

### Be part of science, history & a better world

Here are just a few examples of how Whitman students are working closely with their expert professors—unique and valuable opportunities found here:

- **Art History:** Curate and study maps and artifacts to tell the complex evolution of India's history.
- **Biology:** Care for Whitman's resident snakes and advance scientific knowledge of herpetology, snakes and snakebite risk in Africa.
- **Chemistry:** Research drugs to improve treatments for people with cancer, use a robot to create silver nanocrystals, or practice "green chemistry" looking for alternatives to methods and materials that aren't environmentally friendly.
- **Dance:** Teach hip-hop education and culture in local middle and high schools.
- **French & Francophone Studies:** Document Métis (Indigenous and European mixed race) families living in the Northwest in the 1800s and 1900s and curate their photos and stories.
- **Geology:** Do field study in Yellowstone National Park or use state-of-the-art imaging to understand volcanic samples.
- **Physics:** Research dark matter and how it interacts with neutron stars and how it has affected the history of the universe.
- **Psychology:** Study how baby songbirds learn songs in the lab and how their cognition relates to human learning.
- **Sociology-Environmental Science & Computer Science:** Work collaboratively to create a database on chemical governance to increase accountability and awareness about toxic chemicals.



In the field, in the lab,  
in the studio. We  
treat knowledge as a  
shared experience.



**The Wallula Gap Biological Station** is an arid grassland and shrubland that serves as an outdoor laboratory for teaching and research. The nearly 2,000-acre station west of Walla Walla is managed by the Whitman College Biology Department.









STUDY ABROAD

# Where in the world can Whitman take you?

Explore the possibilities and prepare for life in an increasingly interconnected world.

- Choose from 80+ programs in 40+ countries across the globe.
- Grow through experiences that complement your major.
- Learn a new language or hone existing language skills.
- Experience different cultures and make new friends.
- Research global issues you care about.

“*I am blessed to spend a whole year finding my Schleichwege, little hidden paths, through this beautiful place we two-legged beings call München, Deutschland!*”

—**Olivia M.**, German Studies and Environmental Studies double major  
Year of study in Munich, Germany



Whitties  
around  
the world

**80+**  
programs

**40+**  
countries

- Argentina
- Australia
- Austria
- Cambodia
- Cameroon
- Chile
- China
- Costa Rica
- Czech Republic
- Denmark
- Ecuador
- England
- France
- Germany
- Ghana
- Greece
- Hungary
- Iceland
- India
- Indonesia
- Ireland
- Israel
- Italy
- Japan
- Jordan
- Mexico
- Morocco
- Nepal
- Netherlands
- New Zealand
- Panama
- Scotland
- Serbia
- South Africa
- South Korea
- Spain
- Sweden
- Switzerland
- Taiwan
- Tanzania
- Turks and Caicos

A group of students is shown from behind, holding hands in a circle on a grassy field. The students are wearing various colored shirts, including a light blue one with 'FOX' visible and a green one. The background is a bright, sunny outdoor setting with trees and a clear sky. A white rectangular box is overlaid on the image, containing the main text and a sub-headline. An orange arrow points down from the top of the box to the main title.

# Find Your People

Connection. It's at the heart of living and learning at Whitman.



Cambridge  
est. 1869

Heidi  
L...





# It's the people you'll meet here ...

You'll matter here, and others  
will matter to you.

Academics, yes! But it's also the people you'll meet and the friends you'll make that will truly make your time here special.

That means you'll never be alone on your journey. You'll bond around shared interests in clubs, life in the residence halls and learning experiences in the classroom.

Your classmates, roommates, housemates and teammates will support and challenge you to be your best self—and they'll make you laugh, so many laughs.

*Whitties bring  
the wit and wisdom!*





## Stanton Hall Great Room

Stanton Hall is a LEED Platinum-certified residential hall built in 2018. It primarily houses sophomore residents and provides them with a modern and sustainable living environment on campus.



## LIVING AT WHITMAN

# Friends for life

Learn together. Eat together. Live together.



Your first residence hall will become a safe haven and launching pad for your new life at Whitman. You'll meet people from all over campus as you venture out and about—and still have a special place to call home.

Each first-year hall is staffed with a team of advisors who will plan activities, offer guidance and study support, and help you navigate college life.

*Everyone needs help sometimes.*

## Unique @ whitman

### Interest houses: You live and you learn!

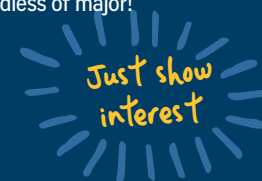
After your first year, you'll have the opportunity to live and learn with other Whitties in one of our 11 on campus interest houses. You'll bond over a weekly family-style meal and take part in special events in the community.

Everyone is welcome to apply to reside in Whitman's interest house community—regardless of major!

### Where do you want to live?

- Asian Studies House (Chinese)
- Community Service Co-Op
- Das Deutsche Haus (German)
- Environmental House
- Fine Arts House
- La Casa Hispana (Spanish)
- La Maison (French)
- Multicultural House
- Tekisuijuku (Japanese)
- Wellness House
- Writing House

*Fondly known as "The Outhouse"*



**Explore our residence halls!**

360-tours and more.  
[whitman.edu/residence-halls](http://whitman.edu/residence-halls)



# Come as you are—be who you're meant to be!



In Whitman's many affinity groups, you can connect over your humanity. Find and give support. Learn from each other. Get inspired.

At Whitman, you'll find many affinity groups—where people with shared identities or goals come together. These groups help students form friendships and feel included, valued and empowered.

## Finding community

Whitman has many clubs and programs that support culture and identity, including:

- Arab Student Society
- BIPOC Outdoor Club
- Black Student Union
- China @ Whitman
- Disability and Difference Community
- First-Generation and/or Working-Class Club
- Global Whitties Club
- Indigenous Peoples Education and Culture Club
- Intercultural Center
- InterVarsity Christian Fellowship
- J-P Club (Japan Club)
- Kehillat Shalom
- LGBTQIA+ Student Services
- Men of Color Association
- Minority Association of Pre-Medical Students
- Muslim Students Association
- Office of Religious and Spiritual Life
- Pan Asian Club
- Partnership with Confederated Tribes of the Umatilla Indian Reservation
- Power & Privilege Symposium
- Šínáata Scholarship
- South Asian Students Association
- Unidos (Latine/Latinx)
- Whitman African Student Association
- Women of Color Voices
- Zen Meditation Club

## The Whitman student body

Diverse & dynamic

**26%**

**U.S. students of color/multiracial**

**18%**

**first-generation students**

**14%**

**international students**



## Where everyone belongs ...

Inclusion is woven into all we do at Whitman. Our entire community is responsible for actively fostering an environment where everyone feels like they belong and can show up as their authentic self.



←  
Watch  
This!



## Food & friends!

Cleveland Commons—anything but common. Locally sourced. Chef-prepared. Delicious.



The entire Whitman community comes together at Cleveland Commons. Meet your professor for coffee, have dinner with your roommate or join friends by the fireplace for a cozy study break.

Like a family dinner table, it's a place you'll connect—over satisfying meals and quick snacks—and make memories.

*With a family you choose for yourself!*



### College + coffee = of course!

Mocha? Cappuccino? Late-night latte? Whitman has three cafés on campus, featuring distinct coffee brands, including a local Walla Walla roaster.





**Yummy!**

See more delicious offerings on Instagram at @bonappetitwhitman.



**Academic  
Resource Center  
Career Coaching  
Center for  
Writing &  
Speaking  
Counseling  
Center  
Disability  
Support Services  
Fellowships  
& Grants  
Financial  
Aid Office  
Intercultural  
Center  
Internships  
Peer Tutoring  
Resident  
Assistants  
STEM Hub  
Student Career  
Advisors  
Welty Student  
Health Center**





## Find support around every corner

What's a constant in a changing  
and challenging world?

At Whitman, it's all the dedicated and caring people—faculty and staff—who prioritize student well-being above all else.

Putting the "ally" in  
thriving academically,  
physically and emotionally.



## WHITMAN'S OUTDOOR PROGRAM

# Let's wander where there's no Wi-Fi

Fresh air. Good friends. New places to discover.



Whitties are often found exploring the Walla Walla Valley, the Blue Mountains and the surrounding areas—by bike, foot, kayak, cross-country skis ... you get the idea!

**The outdoors are for everyone here.** Whitman's Outdoor Program offers a variety of student trips into the wilderness to help you discover the amazing Pacific Northwest. Whether you're an expert or a beginner, there's a trip for you—and there are funds available so everyone can participate.





## Pursue your passions!

If you love the outdoors, Whitman is going to level you up and give you so many options.

- Backpacking
- Canoeing
- Glacier Mountaineering
- Hiking
- Ice climbing
- Kayaking
- Mountain biking
- Mountaineering
- Nature photography
- Rafting
- Rental shop
- Rock climbing
- Skiing
- Snowshoeing
- Stargazing
- Trail work

## Courses & Clubs

- Backcountry Club
- Climbing Club
- Climbing Team
- Outdoor Leadership
- River Guide Leadership
- Sea Kayak Guide
- Leadership
- Whitewater Club
- Wilderness First Responders

Get certified!!

“ I chose Whitman for the Outdoor Program.”

—Xander L., Music major  
(Technology & Production),  
from Seattle

An aerial photograph of a university campus during the golden hour of sunset. The sky is filled with soft, orange and yellow clouds, and the sun is low on the horizon, casting a warm glow over the scene. The campus is densely packed with green trees, some of which are beginning to show yellow autumn foliage. Several brick buildings are visible, interspersed among the trees. A road with a few cars is visible on the right side of the image. A white rectangular text box is centered in the upper half of the image, containing the main title and a descriptive sentence. A yellow arrow points downwards from the top center of the image towards the text box.

# Find Your Place

Pacific Northwest vibes infused with  
the spirit of 1,500 inspiring minds.








# Location. Location. Location.

Choosing a college means choosing a home—  
a place to live, explore and make your own.



At Whitman, we're truly lucky.

First, there's our beautiful campus, where you'll find equally beautiful humans—warm and caring people—who want you to succeed. All the sculptures, trees, ducks and squirrels are pretty sweet too!

And then there's the perfect college town: Walla Walla, Washington.

Whitman is in the heart of Walla Walla. Locals, students and visitors enjoy our award-winning downtown, as well as endless recreational opportunities in and around the area, including the picturesque Blue Mountains in Whitman's backyard.

“*Landing at the Walla Walla airport was magical.  
I took a moment to just stare at the mountains.*”

—**Genevieve V.**, Economics and History  
double major from Brunswick, Maine



## Our stunning campus

Where historic beauty meets the modern world.



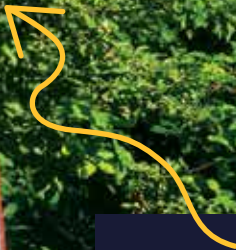
Whitman College's Memorial Building with its prominent clock tower remains the centerpiece of our beautiful campus—it's where commencement ceremonies have taken place for decades.

Yet time hasn't stood still at Whitman.

### **The future is now**

Sustainability. Technology. Inclusivity. Newer construction on campus includes a contemporary art facility with open and airy studio space and a state-of-art dining hall with its own chef, as well as a wood-burning pizza oven, coffeehouse and sushi bar.

Our newest gender-inclusive and green-building residence hall includes many modern amenities and student spaces, including a third-floor balcony, outdoor firepit and sand volleyball court.



## Unique @ whitman

### Living in a modern museum

Students walking to class stroll through history and walk by Whitman's many outdoor art installations along the way.

We  
→  
**1:1**  
our trees  
& forest!

**Student-to-tree ratio**  
You can grow and thrive here too.







## Enjoy 4 seasons of wonder

- Year-round sunshine
- Fall foliage—campus puts on a colorful show
- First snows and snow sports
- Green hills and fields of spring
- Walla Walla sunsets—truly stunning
- Rivers, creeks, lakes and ponds



**Let us show you around!**

Explore campus now with student tour guides.



# The perfect college town

Walla Walla, Washington—an amazing place to live, learn and change the world.



Walla Walla ranks on many best-of-the-best destination lists thanks to its beautiful setting, charming downtown, friendly community, and thriving food, wine, art, music and theatre scene.

You'll find your classmates studying at their favorite coffee shop, checking out the interesting street art, dining in the open air under sparkling lights or simply going for a walk down our tree-lined streets!



## Walla Walla! You're the best ...

- Best Small Town
- Best Road Trip Destination
- Best Main Street
- Friendliest Town in the Country
- Best Food Town
- Cutest Main Street



### Worth the trip

Walla Walla is in the southeastern corner of Washington state with its own local airport. Also nearby: Tri-Cities airport (Pasco, Washington) is less than an hour away. We're less than a three-hour drive from Spokane, Washington, four hours from Portland, Oregon, and roughly four-and-a-half hours from Seattle. (Road trip, anyone?!)



- ALW > Walla Walla
- SEA > Seattle
- PSC > Pasco
- PDX > Portland
- GEG > Spokane

A man with long hair, wearing a grey wetsuit, is paddling an orange kayak in a swimming pool. The kayak has "WAVE SPORT" written on it. In the background, two other people are also kayaking: a man in a black wetsuit on a red kayak and a woman in a red tank top on a green kayak labeled "WHITMAN". The pool is surrounded by blue and yellow pennant banners. A large white text box is overlaid on the top half of the image, containing the title and a sub-headline. A yellow arrow points down from the top center of the image towards the text box.

# Find Your Passion

Explore new possibilities. Promote causes that truly matter to the world. Become your best self.







# What fuels you?

That's a great question!



It's a question you may not even realize you're answering at Whitman. But there will be that day. That day you say, "Whoa, this is so cool. This is me."

You'll feel excited. You'll feel connected. You'll feel unstoppable.

*OK, maybe not those exact words, but you'll feel it.*



*The Women in Science Club is a very important space at Whitman where we support and encourage each other. Our meetings are always a place of support, inclusion and inspiration."*

—Yardena M., Physics-Astronomy major



## AN ALUMNI PERSPECTIVE

**Whitman allowed me to explore my passions** in different fields and find the connections across them. The several on-campus jobs and clubs I participated in allowed me to meet lots of people and learn from different experiences. Most importantly, I was encouraged to take on new challenges and play big by faculty, staff and fellow classmates.

I did a semester at American University in Washington D.C., where I studied policy, business and networking. I also took a Summer Crossroads in Rome, where I learned about environmental studies and started my passion for water rights, which was my thesis topic.



**Juan Pablo Liendo '21,**  
Associate Grant Administrator  
for the Seattle Foundation



Immerse yourself in fascinating courses, hands-on experiences and meaningful work and conversations. It's the Whitman way.







## Unique @ Whitman

### Semester in the West

Explore the American West! This semester-long expedition makes the road, public lands and rural areas your classroom. You'll sleep under the stars and get a once-in-a-lifetime experience to study the diverse ecosystems and social and political communities, as well discovering many environmentally focused career paths.



## Great minds create

Creativity is a powerful mindset. It's a key to finding solutions. It's a beautiful and playful part of being human—and of being a Whittie.

Whitman visual artists, musicians, dancers, actors and writers explore their passions and hone their skills through courses and ensembles led by practicing faculty artists—not to mention the many on-campus clubs, events and workshops that bring creative flair to everyday life on campus. So many creative opportunities await you here.

**Here's a beautiful thing:** You don't have to major in the arts at Whitman to take classes and express your creative side. Maybe you'll take a painting class for fun or modern dance to move your body and soothe your brain.

### Unique @ whitman

#### President's Scholarships

Whitman offers talent-based scholarships in **music, theater arts, fine arts and debate**. These scholarships are open to all majors.



Learn more!

## Where the magic happens

**Fouts Center for Visual Arts:** Houses studios and classrooms for digital arts, sculpture, painting, drawing, ceramics, printmaking, photography and book arts. Fouts fun fact: Each senior art major gets their own studio space.

**Harper Joy Theatre:** In this historic space, you'll find multiple performance and teaching stages, plus a dedicated costume shop. Generations of Whitties have learned to use the stage to entertain and influence the world.

**Dance Studio:** Courses are also available in modern dance and ballet, with visiting artists bringing additional cultural styles each semester.

**Hunter Conservatory:** Home to Whitman's Film and Media Studies program and a beautiful auditorium for performances of all kinds.

**Hall of Music:** Whitman's renowned Music program includes seven different tracks from jazz to theory to tech and production. Musicians and vocalists use this creative space for classes, performances, choral and band ensembles, and individual lessons.

*1/3 of whitties participate  
Majors and non-majors alike*





## Taking real action

At Whitman, sustainability and climate action are woven into our courses and clubs, culture, conversations, and campus consciousness. They matter deeply to our students and our entire community.

Whitman is committed to change and action—from building sustainable spaces to reducing energy and food waste to encouraging walking and biking. The college has committed to offsetting greenhouse gas emissions to achieve carbon neutrality in the coming years.

Come be part of the mission—and find others who are taking real action every day!

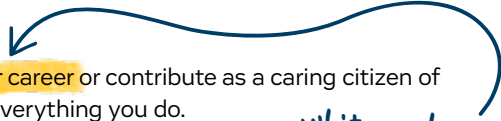


# It's your world— you'll make it better



From our little corner of the Pacific Northwest, you can be a champion for sustainability. You'll find ample opportunity to further your passion for the environment—and empower yourself and others to fight climate change in efforts on and off campus.

At Whitman, you can **make it your career** or contribute as a caring citizen of our campus—and the planet—in everything you do.



*Whitman has cool  
combined majors in  
Environmental Studies!  
See page 10.*

## Top 50

**Green Colleges**  
—The Princeton  
Review

## Top 20

**Western U.S. colleges  
with the cleanest air**  
—HouseFresh

Clean air  
Locally sourced food

Campus as a  
living laboratory

Organic Garden

Solar energy

Climate &  
sustainability research

Student clubs

Guest speakers

LED lighting

Social equity initiatives

Environment-focused  
courses & degrees

Bike-share program

Community service

Walkable city

Internships

Tree Campus USA

Semester in the West

Green-building practices





## Whitties get involved

It's who they are—it's what they do.

Many of our students arrive passionate and committed to causes—social justice, belonging, voting rights, immigration, gender equity and more. At Whitman, they build on that and inspire others along the way.

Other Whitties first discover their **passion and purpose** here—in and out of the classroom, on and off campus. They do and achieve things they never thought possible.

## Top 10

**Best Schools for Making an Impact (among private institutions)**

—The Princeton Review

“Many of us would say that we care about inequities on campus, that we try to recognize our own identities and the various levels of privilege we own. But it's one thing to say something. It's another thing to do something.”

—**Merry C.**, English and French & Francophone Studies double major, Power & Privilege leader

# Whitties making a difference

Our students devote their ideas and time to causes, to each other and to the wider community.

## Unique @ whitman

### Power & Privilege

At Whitman, we make space for tough and productive conversations—every day. But there's one day when we all dive in together. For the Power & Privilege Symposium, classes are canceled to allow our entire community to engage in student-led sessions, panels and discussions related to equity, belonging and social justice.

Adopt-a-Grandparent

Art education

Buddy Program

Feminists for Change

Food banks

Food Justice Project

High school mentors

Humane Society

Mental health awareness

Organic Garden

Peaceful protests

Planned Parenthood

SOS Clinic

Special Olympics

Story Time

Student government

Vaccine clinics



ATHLETICS

# Whitman for the win!

Our students challenge themselves to be their very best in the classroom—and on the court, track, field or in the pool. Whitman student-athletes—the Blues—gain leadership skills and build self-discipline, confidence and a spirit of collaboration.

Whether you're on a varsity, club or intramural team, or just want to build your strength with a fitness class or at the gym, Whitman offers the support and facilities you need to thrive.



**WHITMAN**  
**—BLUES—**



Join the Blues!



*This form's  
for you*





STUDENT CLUBS & ORGS

**Find new passions.  
Serve others.  
Dabble for fun.**

At Whitman, we encourage students to take advantage of the **various clubs and organizations**. Launch your own radio show, join your friends in the fight to stop climate change or run for student office. Dance. Cook. Play board games.

*Or create your own club like many whitties before you.*

**100+**

**student clubs & organizations**

**8**

**fraternities & sororities**

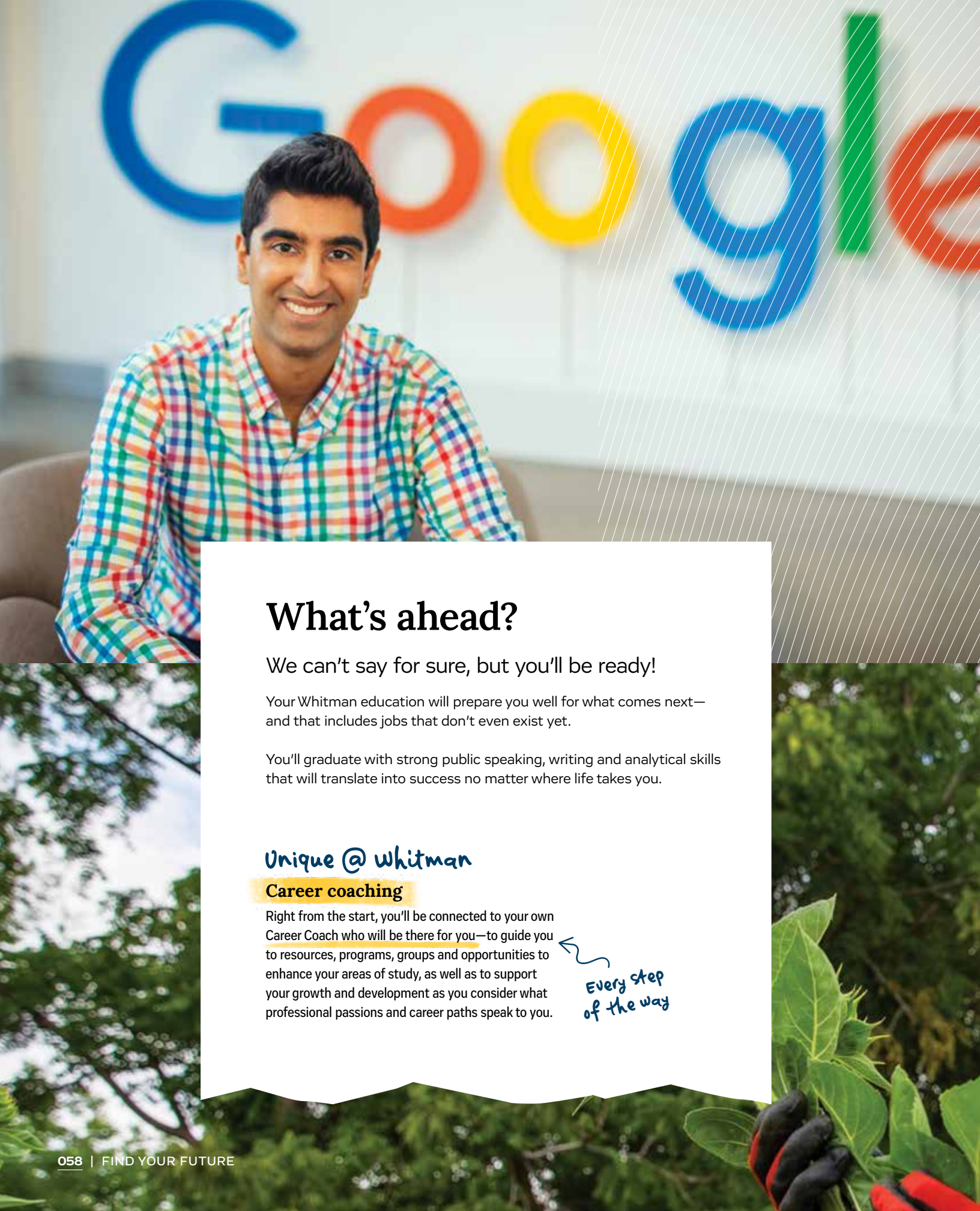






# Find Your Future

Whitman grads go on to do incredible things—and it all starts here.



## What's ahead?

We can't say for sure, but you'll be ready!

Your Whitman education will prepare you well for what comes next—and that includes jobs that don't even exist yet.

You'll graduate with strong public speaking, writing and analytical skills that will translate into success no matter where life takes you.

### Unique @ whitman

#### Career coaching

Right from the start, you'll be connected to your own Career Coach who will be there for you—to guide you to resources, programs, groups and opportunities to enhance your areas of study, as well as to support your growth and development as you consider what professional passions and career paths speak to you.

Every step  
of the way

# What's your dream internship? We'll pay for it!

Paid internships—through the Whitman Internship Grant—are part of our commitment to making sure you can explore possibilities and connect your skills and passions to what you do next.

Whitman's Career and Community Engagement Center is the place to go for help pursuing internships—and so much more! You'll find inspiration and resources to help you:

- Get involved with local organizations.
- Volunteer in the community.
- Hone your resume and cover letter.
- Practice your interview skills.
- Meet potential employers.





# Whitman grads

Where can a Whitman education lead you?

Anywhere you want to go!

Whether you're ready to find a job you love, go to graduate school or launch your own business, your Whitman experience will help you forge your own path.



## Fellowships

Whitman will help you find a fellowship to solve real-world problems.

Our students are the recipients of many prestigious fellowships, scholarships and grants each year to do meaningful work around the world. At Whitman, we help you find the right opportunity to pursue your passions, as well as support you through the application process.



“

I went to an information session ... and I took home a Watson Fellowship pamphlet and pinned it to my corkboard for the next four years.”

—Liam V., Environmental Humanities major awarded a Thomas J. Watson Fellowship to study the link between water resources and food production, distribution and consumption in Austria, Vietnam and Japan

Dream Big!!



**Careers** !!!

Whitman graduates pursue careers, causes and passions. Recent first employers of Whitman graduates:

Amazon • Apple • Columbia University • Fred Hutchinson Research Center • Fulbright Program • Goldman Sachs & Co. • Google • LinkedIn • Mayo Clinic • Microsoft • NASA • SpaceX • Tesla • U.S. Forest Service • U.S. Department of Justice • U.S. Senate ... **and many more!**



**Grad school**

More than half of graduates go on to pursue advanced degrees, enroll in academic doctorate programs and top schools in business, law and medicine, including:

Baylor • Cambridge • Columbia • Johns Hopkins • Mayo Clinic • MIT • NYU • Oxford • Stanford • Tulane • University of Chicago • University of Washington • Wake Forest • Yale ... **and the list goes on and on ...**





### Whitties Helping Whitties

You'll have an entire community rooting for you to succeed—professors, classmates and Whitman alumni, who are working and living around the world. Our Whitties Helping Whitties events will connect you with alumni in your field to help you find mentors, internships and career opportunities. You may only have four years on campus, but you'll have a lifetime of connections.

*Your own built-in network!*

# What a journey!

We're here for you—from your first year to your first career



Whitman is not just a resource, but a loyal companion dedicated to helping every student discover amazing professional and academic experiences, service opportunities and actionable career coaching.

At Whitman, the team in our Career and Community Engagement Center—including your own dedicated Career Coach—will help you from your first year to your first career. With the center's expert guidance and resources, you'll create your own unique Whitman story.

## What to expect from Day 1

**You'll explore and get ready!** At Whitman, we'll help you:

- Get on-campus jobs and your dream internships.
- Develop a college-level resume that showcases your talents and aspirations.
- Find opportunities to volunteer on campus and locally.
- Connect with Whitman alumni, mentors and online professional communities.



*We love helping whitties grow more confident and empowered as they go!*



## Seek & gain experience along the way

You can count on extraordinary opportunities and Whitman's support to:

- Do good—and connect with organizations dedicated to issues that matter to you, your classmates and the world.
- Discover fields and careers that align with your interests and studies.
- Grow as a leader—in student clubs, college programs or student government.
- Study abroad! We'll help you make it happen from program applications to visas.
- Have the best summer vacations. Maybe you'll get paid (Whitman will pay you!) to research in a cutting-edge science lab with your professor or to intern in a field that interests or intrigues you.

**You'll develop a network, look ahead and be ready to launch!** You'll be prepared for whatever comes next.

With Whitman's support and backing, you'll:

- Get a jump on grad school—collaborate with faculty on research, publish a paper or present at conferences like the Whitman Undergraduate Conference (see page 12).
- Practice like a pro with your Career Coach. Do practice interviews, update your resume and LinkedIn profile, write cover letters, etc.
- Leverage Whitman's powerful alumni network and mentoring programs.



**Spoiler alert:** This is going to be good! So buckle up, embrace the journey and get ready to make your mark on the world. Your story is about to unfold in ways beyond your wildest dreams.



The future is yours!

## The Whitman grad's skill set

According to the National Association of Colleges and Employers, successful graduates need certain competencies to thrive professionally. At Whitman, we don't take that lightly—we weave our transformative classroom experience with hands-on career development to give our students the skills they need for success in life and work.

### Communications

Listening, writing and speaking

### Critical thinking

Decision-making and problem-solving

### Equity & inclusion

Actively practicing and learning

### Leadership

Motivating for a shared vision

### Professionalism

Acting with integrity and accountability

### Teamwork

Working collaboratively

### Technology

Adapting to and leveraging new technologies

# Financial aid

When you're looking at colleges, cost matters. That's why we do it right.



Your college education will be one of the most important investments of time and money you will ever make. At Whitman, we are committed to keeping our world-class education as affordable as possible.

Whitman has received top rankings from the Princeton Review for most accessible professors, best classroom experience and best quality of life, and has consistently made the "Colleges that Pay You Back" list for value.



## Did you know?

Whitman College is the No. 1 ranked Liberal Arts College in the Northwest.

—2024 Best Colleges,  
U.S. News & World Report

## Unique @ Whitman

### Our Early Financial Aid Guarantee

You can request your financial aid offer—even before you apply. And it's guaranteed! #truestory



# 91%

of students receive financial aid

## Merit, talent & need

Whitman offers a robust financial aid program that includes scholarships, grants, employment and loans.

## Noteworthy!

Whitman College has been featured in The New York Times multiple times for our innovative and transparent approach to financial aid.

## Known for low debt

Whitman students who take out loans consistently graduate with low debt. Average debt is around half of the national average and in some years is the lowest of any college, public or private, in the Pacific Northwest.



# Your Official Guide to Whitman College

Start here



WHITMAN COLLEGE  
Office of Admission  
345 Boyer Avenue  
Walla Walla WA 99362



# THE UNOFFICIAL GUIDE

We know our students are Whitman's top influencers. They're living it—and we want to give them a chance to tell our story.

This guide contains insider information on life at Whitman. Campus spots, cool classes to take and things to do ... food, friends, fun and more!

Explore on to discover our college from the most reputable source—our students! ❤️💛❤️

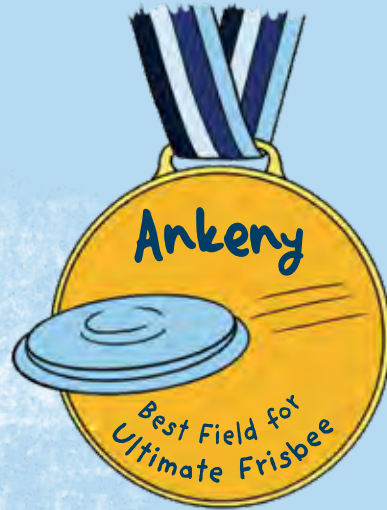
## Student contributors

Madi W.  
Zoe P.  
Berty L.  
Kate M.  
Arlo S.  
Theo D.  
River W.  
Sami M.  
Andrew H.

illustrator extraordinaire!



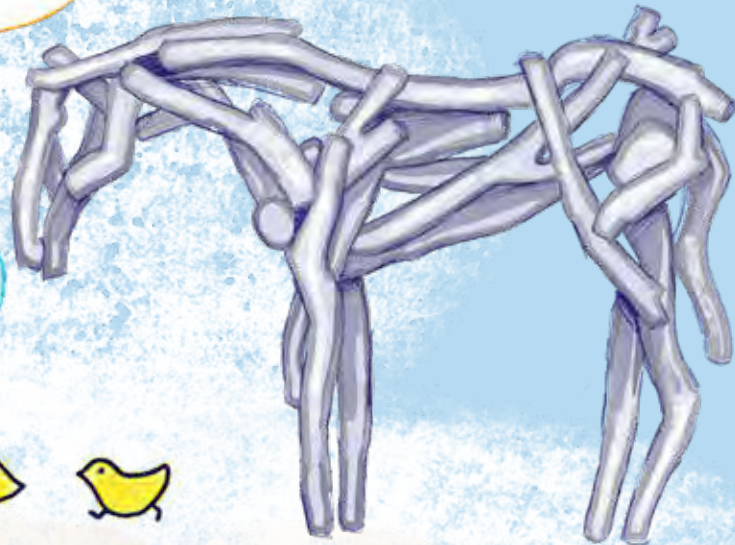
# “LEGIT” WHIT RANKINGS



# WHITTIE AFFIRMATIONS

Styx\*  
with it!

Baby ducks  
are life!



\*Styx—an iconic campus sculpture

... all I need is a sunset ...

# CLASSES THAT



"I would 100% recommend **DEVELOPMENTAL PSYCHOLOGY**, especially if you want to work with children in any capacity. I also adored the **PSYCHOLOGY OF LEARNING** course taught by Wally Herbranson in which we trained rats to play basketball!"  
—Madi W., Psychology and Hispanic Studies double major

"**THE BIOLOGICAL WORLD, INTRO TO ENVIRONMENTAL STUDIES**, and **THE PASTORAL, THE WILD, AND THE COMMONS** changed me as a person because I became more conscious of my role as an individual in natural and human systems, I became better at seeing the natural world, and I came to recognize the importance of people in habitat management."

—Fraser M., Biology-Environmental Studies combined major

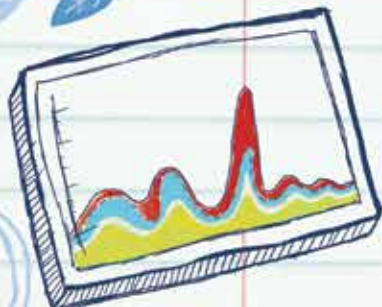


"One of my favorite classes I've taken was **RELIGION AS POPULAR CULTURE**, which reviewed instances of public life that would normally be considered secular. We talked about the Super Bowl, the Kardashians, Co-Star and other astrology apps, etc. and the application of religious thought structures to social life."

—Rosa W., Anthropology major



# CHANGED MY LIFE



"Professor Alissa Corder introduced me to the field of Public Health through her course **SOCIOLOGY OF HEALTH AND ILLNESS**. With her mentorship, I was able to attend grad school and ultimately land my dream job as an epidemiologist."

—Omar A., Biochemistry, Biophysics and Molecular Biology (BBMB) major



"**MUSIC TECHNOLOGY** teaches some really crucial skills like digital fluency which are essential prerequisites to making music. It's extremely valuable to learn those skills."

—Mo D., Music Composition major



"There are so many to choose from, but I really loved taking **ANTHROPOLOGY OF DIGITAL MEDIA!** We were applying anthropological theories to analyzing memes, emojis, slang and text messages."

—Cheysen C.S., Anthropology major



"**GALACTIC ASTRONOMY**—this was the first upper-level astro class I took ... This course really helped me make connections between astronomical processes and analysis methods. I learned practical skills and had the opportunity to apply those skills to real astronomical data."

—Yardena M., Physics-Astronomy combined major



1. Mem aka Memorial Building, where the clock tower rings.

2. The ducks at Lakum Duckum are our most favorite waddling friends!

3. As soon as the sun comes out, Whitties swarm Ankeny for Frisbee, slacklining and Spikeball!

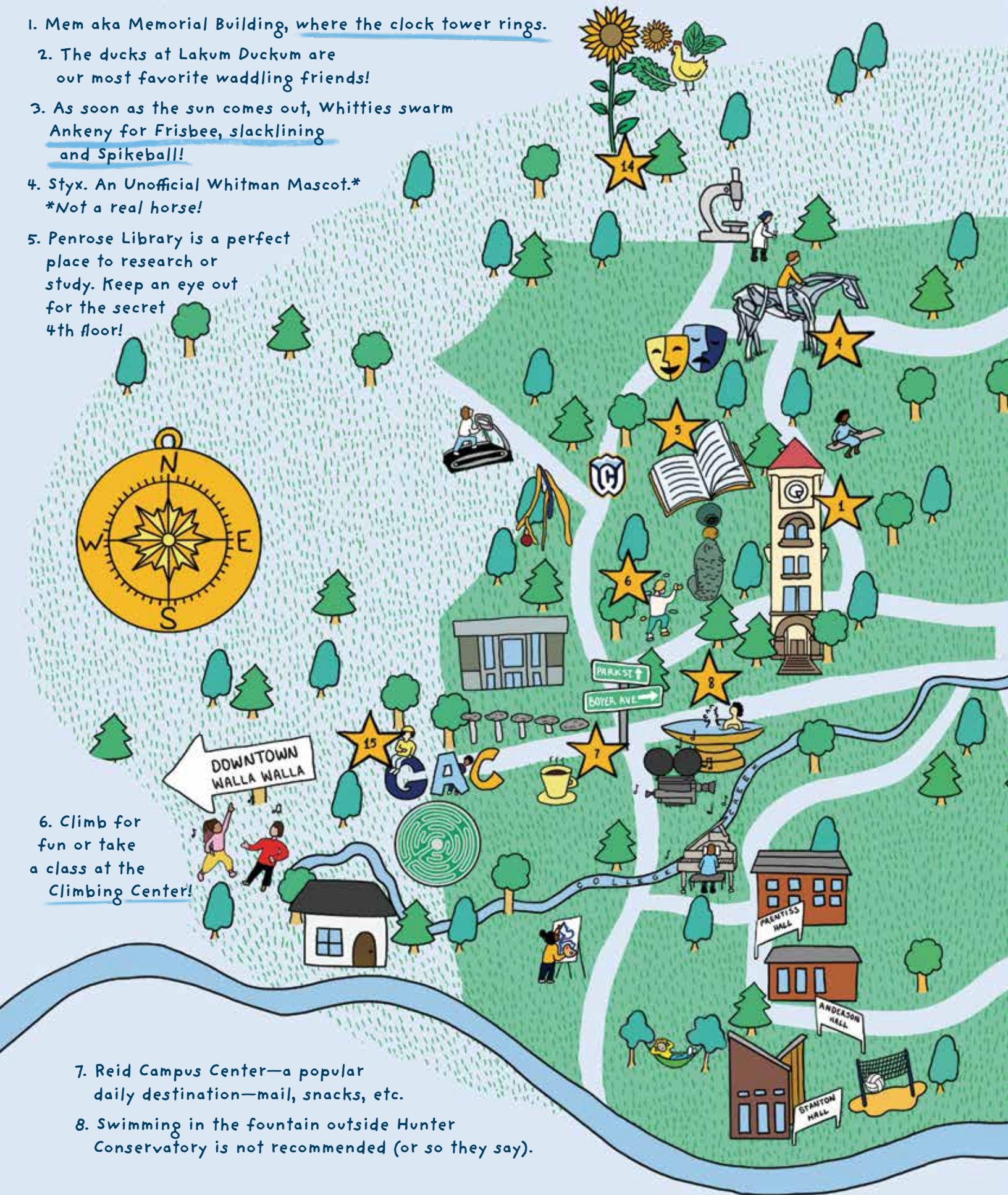
4. Styx. An Unofficial Whitman Mascot.\*  
\*Not a real horse!

5. Penrose Library is a perfect place to research or study. Keep an eye out for the secret 4th floor!

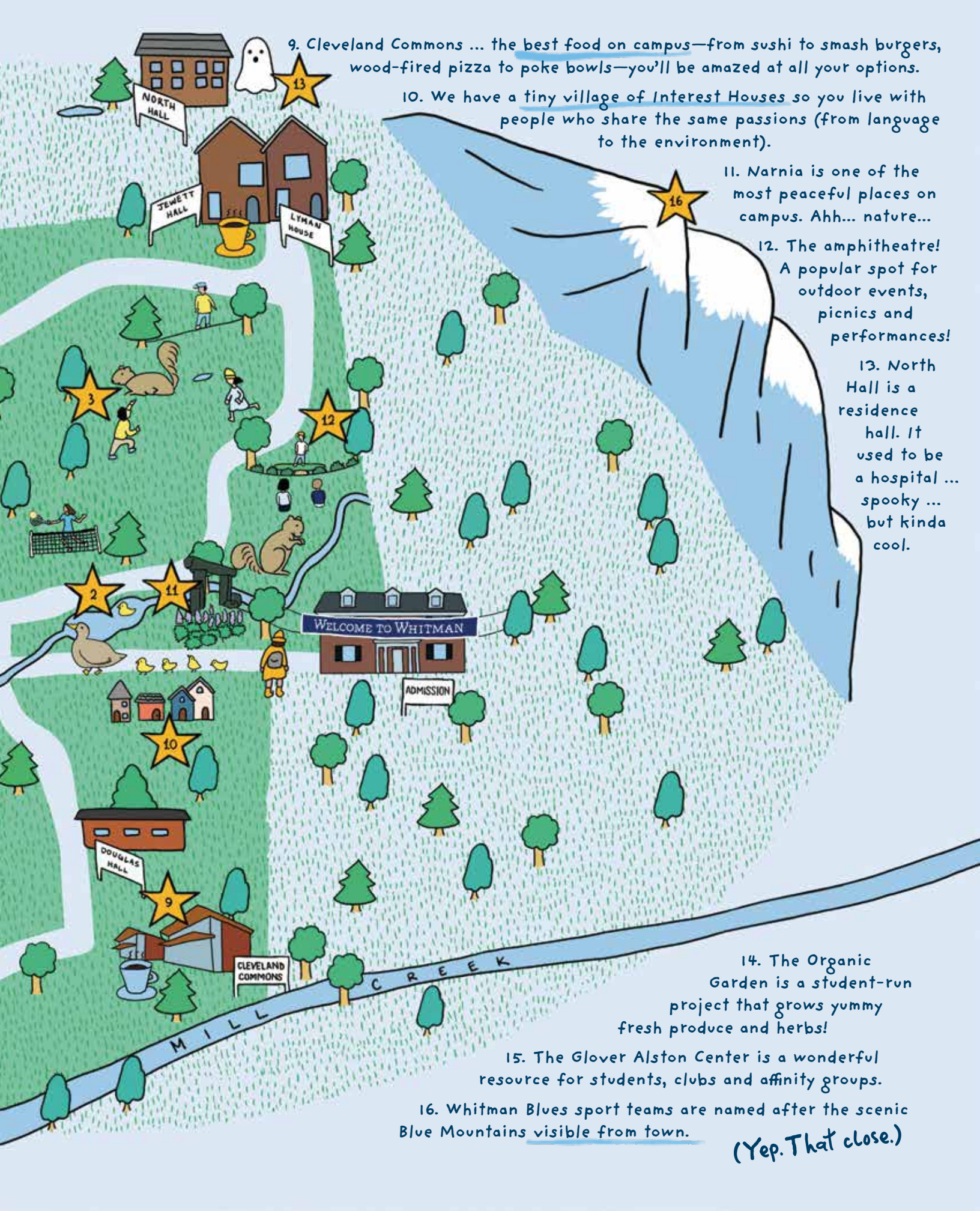
6. Climb for fun or take a class at the Climbing Center!

7. Reid Campus Center—a popular daily destination—mail, snacks, etc.

8. Swimming in the fountain outside Hunter Conservatory is not recommended (or so they say).







9. Cleveland Commons ... the best food on campus—from sushi to smash burgers, wood-fired pizza to poke bowls—you'll be amazed at all your options.

10. We have a tiny village of Interest Houses so you live with people who share the same passions (from language to the environment).

11. Narnia is one of the most peaceful places on campus. Ahh... nature...

12. The amphitheatre! A popular spot for outdoor events, picnics and performances!

13. North Hall is a residence hall. It used to be a hospital ... spooky ... but kinda cool.

14. The Organic Garden is a student-run project that grows yummy fresh produce and herbs!

15. The Glover Alston Center is a wonderful resource for students, clubs and affinity groups.

16. Whitman Blues sport teams are named after the scenic Blue Mountains visible from town.

*(Yep. That close.)*

# BEST STUDY SPOTS

Study & snack at Reid Market—(soft serve)!

If you're looking for a less busy study spot, try the lounge in the Reid basement!



Jewett and Cleveland cafés are super cozy.

Plus coffee!!

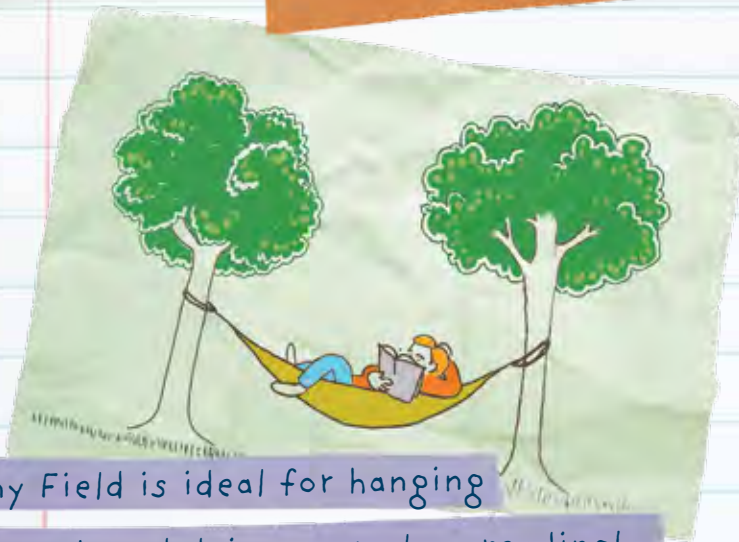


Penrose library has great places to focus and see friends.



The Hall of Science has tons of natural light and quiet nooks.

Ankeny Field is ideal for hanging a hammock and doing your class reading!



# WHERE'S YOUR WHITMAN HAPPY PLACE?



Ankeny Field

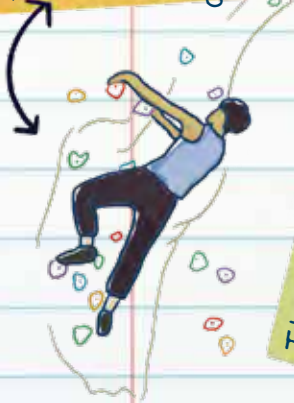


The Planetarium



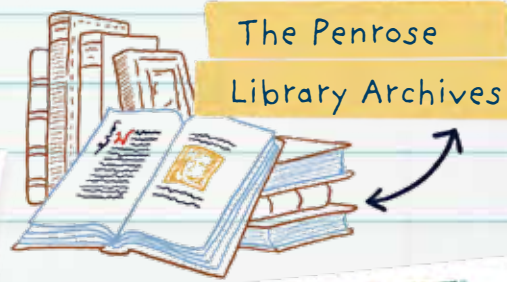
The Amphitheatre

The Climbing Wall



(a supportive spot for gathering)

The Dance Studio



The Pentose Library Archives



Narnia



Glover Alston Center

GO ON A QUICK BIKE TOUR AROUND CAMPUS



# WHY WE LOVE CLEVE\*

\* Cleveland Commons (aka Cleve) is the name of our amazing dining hall on campus

Whitman's  
Cooking Club!

Hands on!

Running  
into  
friends



Chocolate-chip  
banana  
bread!  
YUM!!!

House-made  
ice pops



Noodles,  
pizza,  
sushi ...  
all of the  
things!

Milkshake  
POP-UPS

GREAT  
coffee!  
↗

# What to bring to Whitman

- ☐ An open mind
- ☐ Passion
- ☐ Patience & persistence
- ☐ Humanity & humility
- ☐ Your sense of humor
- ☐ Anything that makes you feel at home (a stuffed animal, pet plant, etc.)



# Like (Write it!) Community Writing Workshops

 Tuesday Jan. 25 3:30 p.m. Jerrit Gilman	 Tuesday Feb. 8 4 p.m. W. Todd Kamenski
 Tuesday Feb. 22 4 p.m. Tomás O. Morán	 Tuesday March 8 4 p.m. Henrietta Goodman
 Tuesday March 29 4:30 p.m. Danika Kelly	 Tuesday April 19 5 p.m. Christopher Salerno

Register Online (Required): whitman.edu/english/like-write-it

## ATTITUDE OF GRATITUDE

When: November 1-5th  
Where: Reid Coffeehouse  
Time: 4 - 6 pm.

**Monday:**  
52 Reasons I'm grateful for you

**Thursday:**  
Faculty & Staff Appreciation Day!

**Tuesday:**  
The Mark you Left in Me

**Friday:**  
Self-Appreciation Day!

**Wednesday:**  
Student Appreciation Day!



## LAST DAY LUCKY LLAMAS

SIX SUPER SWEET AND FUN LLAMAS WILL BE ON CAMPUS TO BRING THEIR GOOD LUCK FOR STUDENTS AS THEY HEAD INTO FINALS WEEK! JOIN US FOR SUPER ADORABLE STUDY BREAK EVENTS!

LOCATION: STANTON LAWN (IN FRONT OF CLEVELAND)  
DATE & TIME: MONDAY, MAY 9TH @ 11AM



# PUMPKIN CARVE

### EMPEL LECTURE IN BIOLOGY

## REME RVATION

### ORLD WITHOUT ICE

Dr. Joel Berger  
National Center for Earth and Space Science Education  
University of Colorado Boulder

# SO. MUCH.

## The ROCKY HORROR Picture SHOW



## THIRD SPACE SPEAKER SERIES

### DR. JARED BALL AND DR. A.D. CARSON

## THE SCHOLARSHIP OF HIP-HOP

The Third Space Speaker Series features scholars, artists, writers and thought leaders whose work helps advance inclusive excellence at Whitman and serves as an intentional manifestation of the college's stated commitment to diversity, equity, inclusion and attraction.

This event will feature **Dr. Jared Ball**, Professor of Communication Studies at Morgan State University, and **Dr. A.D. Carson**, Assistant Professor of Hip-Hop and the Global South at the University of Virginia.



DR. JARED BALL



DR. A.D. CARSON

**YOUNG BALLROOM, REID CAMPUS CENTER**  
**THURSDAY, SEPTEMBER 22 • 6 P.M.**

Please call The Director for Diversity and Inclusion for further information and/or to request accommodations at (509) 527-4297 or email diversity@whitman.edu

## WEB PRESENTS

# SUMMER IN SPRING FUN DAY

## HAVE YOU SEEN MY LOST SOCK?

IT MAY NOT SMELL TOO GREAT, BUT IT'S ONE OF MY FAVORITES I'D LIKE TO HAVE IT BACK.

...LES + SNOW CONE  
...IT + SNACKS + FRE  
...GAMES + MUSIC + A  
...MUCH MORE!

**SATURDAY APRIL 9TH**  
...NER SIDE LAWN

# PUMPKIN CARVING

BOUGHT TO YOU BY WEB

OCTOBER 23, 2:00-4:00 PM  
STANTON FIELD

PUMPKINS, CARVING TOOLS, AND  
ICE CREAM ARE FREELY AVAILABLE

# ANNUAL DUCK HUNT!

APRIL 25 - APRIL 28

It's that time of year! The Student Activities office brings back the annual duck hunt this year for more scavenger hunt fun! Rubber ducks will be hidden all over campus Monday, April 25, Thursday, April 28 so gather all your friends for a chance to win fun prizes. Whitman community folks can turn in found ducks for prizes in the student activities office (Reid Campus Center 202)

Whitman Events Board

# Encanto MOVIE NIGHT

Friday, April 8th.

FREE Arepas and Tres Leches!

Bring your friends and a blanket for a fun evening movie watching event!

Featured Disney Movie:  
**ENCANTO**

This event is open to the Whitman community who has received a welcome booster. Proof of vaccination will be required.

101a 129  
From 7:00pm-9:00pm

# S'MORES AT THE WRITING HOUSE

4 o'clock SUNDAY  
BRING CHOCOLATE!!

# TO DO.

# WHITMAN UNDERGRADUATE CONFERENCE

HEADED TO PORTLAND THIS WEEKEND STARTS SAT 10:00 AM BY



# KARI MARIE ENVIRONMENTAL SETTLEMENT RESPON

## REVITALIZING INDIGENOUS CULTURES IN THE FACE OF CLIMATE CHANGE

Climate change is repressing the ecological world upon which all economic and political institutions depend, yet little response has been made. Why have so few taken any action? This paper and action has been a critical concern to climate scientists, activists and others who believe in the need for immediate action to address the climate crisis. The author will discuss the role of the media in raising awareness and mobilizing the public to demand climate action. The author will also discuss the role of the media in raising awareness and mobilizing the public to demand climate action.

# Hosokawa Journalism Lecture

## LEAD FROM WHERE YOU ARE

VISUAL STORYTELLING INNOVATION INCLUSION AND DIVERSITY

Corinne Chin of the Associated Press presents this year's Hosokawa Journalism Lecture.

She is Director of News Talent for Recruitment at the Associated Press and a former senior video journalist at The Seattle Times, where she founded and led that newsroom's Diversity & Inclusion Task Force.

MEET AT THE HEARTH AT 7pm!!

FINAL WEEK NACHOS

# Blackout Poetry Night

30 April 3-5 pm  
Reid Coffeehouse  
Food will be provided

# WALKABLE WALLA<sup>2</sup>

**Eateries** Walla Walla has tons of great restaurants. If you're looking for breakfast, lunch or dinner, you'll find a spot!

- Burgers and wings
- Tasty taco trucks
- Sushi, Asian Fusion, Italian, French or Greek, anyone? What about authentic Indian cuisine?
- And SO many breakfast options!



Steps from campus!



**Sweeteries** Need to satisfy your sweet tooth? Downtown has multiple places to get pastries, coffee, tea, boba, milkshakes, ice cream or candy!



**Fun-tivities** Downtown has plenty of entertainment!

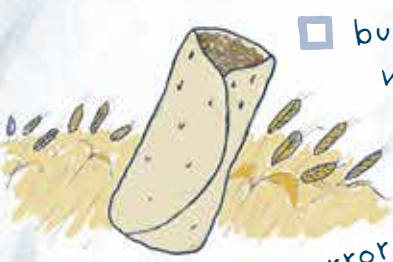
- Bowling • Karaoke
- Jazzercise • Karate
- Concerts • Virtual golf
- Plus MORE!!!



**Volunteer-ities** You can volunteer locally just a short walk from Whitman! Do good, feel good. Elementary schools, nonprofits, the public library, community groups, the Y ...  
Plus the public transit has routes that will take you all across the valley!







□ burritos in the wheat fields



□ walk around

Bennington Lake



□ Outdoor Program trip

□ Rocky Horror Picture Show (show up and have a good time!)



□ slackline on Ankeny



□ workin' in the organic garden



□ host a radio show on KWCW



□ present at Power & Privilege

# BUCKET LIST

✓ (You'll make your own of course.)

□ rock climbing!



□ study abroad



□ find the fourth floor of the Library



□ PNW city adventure (Seattle or Portland or bust)



□ Palouse Falls

□ picnic on Ankeny



□ take a dance class ... modern, ballet, hip-hop culture



□ WW downtown farmers market

# well, this is a big deal!



SPANISH LANGUAGE MENTOR  
**SOCCER STAR**  
 DOCTOR IN TRAINING  
 COMMUNITY HEALER

PRESIDENT OF PRE-HEALTH CAMPUSS CLUBS

\*selected for a supercool, highly competitive fellowship that will allow her to study traditional medicine while traveling the world.

Katie—Global Health & Hispanic Studies double major

READY FOR ANYTHING

TEACHING ASSISTANT & SCIENCE TUTOR  
 COMMUNITY VOLUNTEER  
**INVOLVED ICON!**



Austin—Biochemistry, Biophysics & Molecular Biology major

**SUPER SCIENTIST**  
 SUMM FOR THE BUES

**CANCER RESEARCHER**

**STUDENT GOV PRESIDENT**  
 CHANGE MAKER - GLOBAL SCHOLAR

\*GOT A FULL RIDE SCHOLARSHIP TO STUDY GLOBAL AFFAIRS IN CHINA!



Salma—Chinese & Politics double major

FIRST-GENERATION COLLEGE GRAD  
**TRAILBLAZER**

**AMAZING!**

SEE CASSIDY'S  
"OUR WHITMAN,  
MY STORY"



ROCK CLIMBING  
ROCK STAR

COMMUNITY BUILDER  
UNDERPRIVILEGED YOUTH



Cassidy—Sociology major,  
Hispanic Studies minor

\*TURNED HER PASSION  
INTO PURPOSE  
BY CREATING AN  
AFTER-SCHOOL  
ROCK CLIMBING PROGRAM  
THAT IS FREE AND  
ACCESSIBLE TO  
LOCAL YOUTH

BUSY BEE RESEARCHER



Maya—Biology  
major

STUDENT LEADER  
DATA ANALYST  
FUTURE VET  
DELTA GAMMA

CREATIVE

WRITER • KEYBOARDIST



Zac—Film & Media  
Studies major

\*COFOUNDED  
THE MUSICAL GROUP  
WINDUP BIRDS  
with Fellow WHITTIES

\*CREATED VIDEO  
TO RAISE AWARENESS  
ABOUT MNM'S INCARCERATION

FILMMAKER

COMMUNITY MINDED

COMMUNITY ACTIVIST  
SOCIAL CHANGE MAKER  
PUBLIC PROBLEM SOLVER  
ADVOCATE FOR  
FOOD SECURITY



Devon—Sociology &  
Race & Ethnic  
Studies double major\*

\* FILLED RESUME WITH  
EVERYTHING FROM COORDINATING  
HOUSING AND EMPLOYMENT TO MENTORING  
YOUNG CHILDREN TO RESEARCHING  
POPULATION GROUPS AND ADVOCATING  
FOR DIVERSITY!

WOW!

DEDICATED



# WISH YOU WERE HERE

Visit soon  
Find out what  
makes Whitman a  
place like no other.



Now all that's left to do is visit! Parts of this guide might seem too good to be true, so we encourage you to come to see for yourself. To get started, go to [whitman.edu](http://whitman.edu) and find "Visit Whitman." Be careful! As soon as you step foot on the gorgeous Whitman College campus, you might find it hard to leave.

NOTES



Feeling Social?! Right this way!  
@WhitmanCollege

