



# Whitman Today

Tuesday, April 28, 2020

## Coronavirus News

There were no new coronavirus cases in Walla Walla County in the past 24 hours. So far there have been 57 confirmed cases in the county and 15 residents have recovered from the virus.

Gov. Jay Inslee announced on Monday that Washington state will partially open outdoor recreation areas and activities next week for day use, including state parks, public lands and boat ramps, as well as hunting and fishing. Inslee said the May 5 reopening of outdoor recreation is the second step of many in reopening the state's economy, but did not indicate what the next steps are or when they would come. He said many restrictions would have to stay in place beyond May 4, the original date the stay-at-home order was set to expire.

[Whitman's Coronavirus Website](#)

## Announcements

### Get to Know Our Alumni on Instagram

Through May 3, follow along as the Office of Alumni Relations takes a virtual stroll down memory lane to meet some of the most famous Whitman alumni. Each day, a new and notable Whittie will be featured on the [@whitman\\_alumni](#) Instagram story, with some fun facts about their time at Whitman and their later careers. Follow along to get to know some of our amazing alumni!

## Campus Resources

### Victims Advocate Available for Whitman Community

Whitman's Sexual Assault Victim Advocate Jessica Matthews is still available to students, faculty and staff throughout the rest of the spring semester and beyond. Contact her at 509-526-3032 or [sava@ywcaww.org](mailto:sava@ywcaww.org) to set up a confidential phone call or a face-to-face virtual meeting if you have experienced any form of sex- or gender-based discrimination, harassment or violence. Someone is always available at the YWCA's 24/7 crisis line, 509-529-9922.

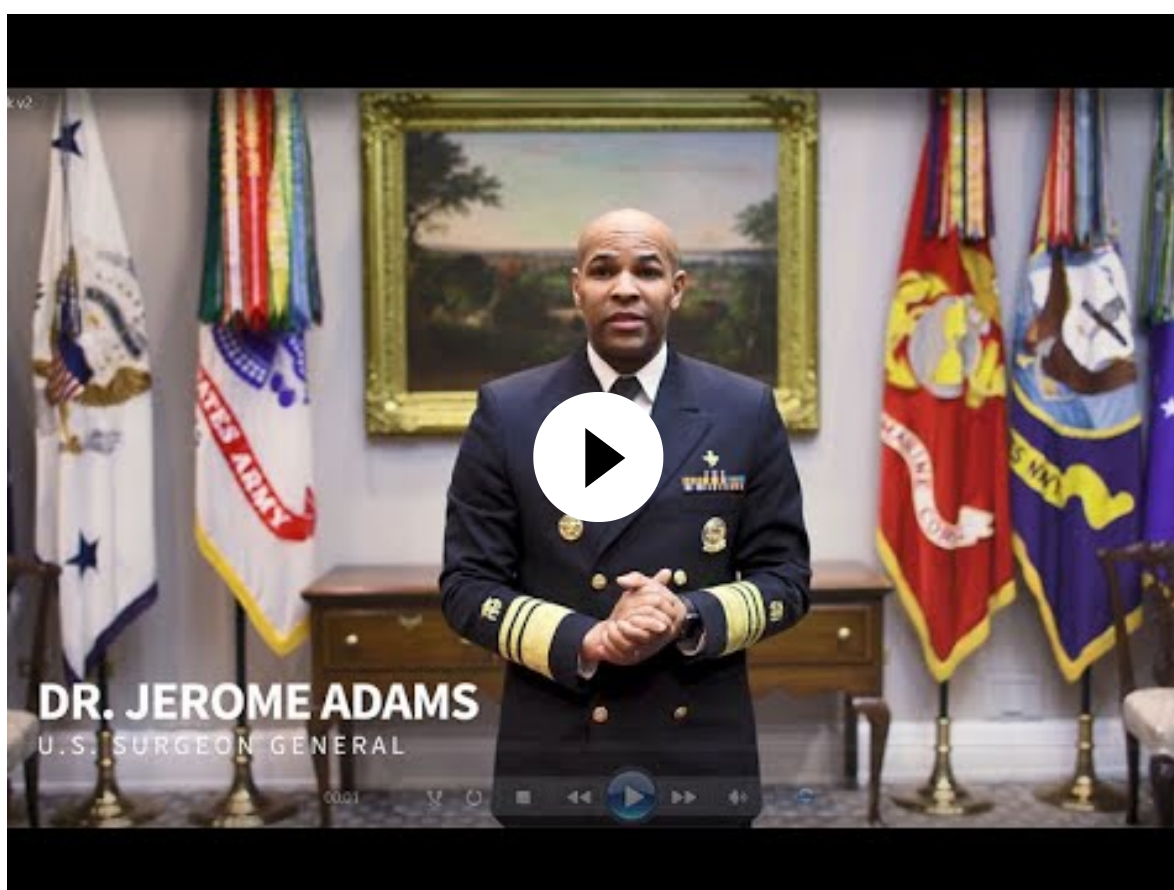
## Online Learning Tips and Tools

### Language Learning Center Still Open

The Language Learning Center continues to offer support to all of our language learners. You can participate in conversation groups virtually with our language assistants, and the English Language Fellows continue to offer online meetings. [Find contact information on the LLC website.](#)

[Online Learning Resources for Students](#)

## Health Reminder



### Face Coverings Slow Spread of COVID-19

The [Centers for Disease Control and Prevention \(CDC\)](#) is recommending wearing cloth face coverings in public settings, especially where social distancing measures are difficult to maintain (such as grocery stores). Using a cloth face covering may help slow the spread of the virus and prevent transmission. Do not use surgical masks or N-95 respirators, as these supplies are critical for our health care workers. You can make a simple, no-sew face mask from clothing items such as T-shirts or bandanas.

[Health and Social Distancing Tips](#)

## Happening Today and Tomorrow

### TODAY

4 p.m. [David Schmitz on The Liberal Arts Crisis in the 1970s](#)  
*Robert Allen Skotheim Chair of History David Schmitz will discuss the problems that faced by liberal arts colleges in the mid-1970s and examine one key response by the Skotheim administration: the professionalization of the faculty.*

### TOMORROW

4 p.m. [Honors Thesis Info Session](#)  
*Join Librarian Emily Pearson for a webinar over Zoom covering submitting your thesis to the library for honors.*

5 p.m. [Immigration Week Speaker: Savannah Son](#)  
*Savannah Son will discuss the devastating impacts of the school-to-prison-to-deportation in the Southeast Asian American community and the grassroots movement fighting for the right for the community to heal and stay together.*

7 p.m. [Intercultural Center Virtual Game Night](#)  
*Join International Student Advisor Greg Lecki for some game battles online.*

[More Upcoming Events](#)

Have a virtual event you'd like to share with campus? Email the details to [whitmantoday@whitman.edu](mailto:whitmantoday@whitman.edu).

"Whitman Today" is produced by the Office of Communications and is emailed daily to Whitman College staff, faculty and students. All times are listed in Pacific Daylight Time. Previous newsletters can be found on the [Whitman Today archive website](#).

To submit items, email [whitmantoday@whitman.edu](mailto:whitmantoday@whitman.edu). The deadline for newsletter submissions is 4 p.m. the prior business day.

