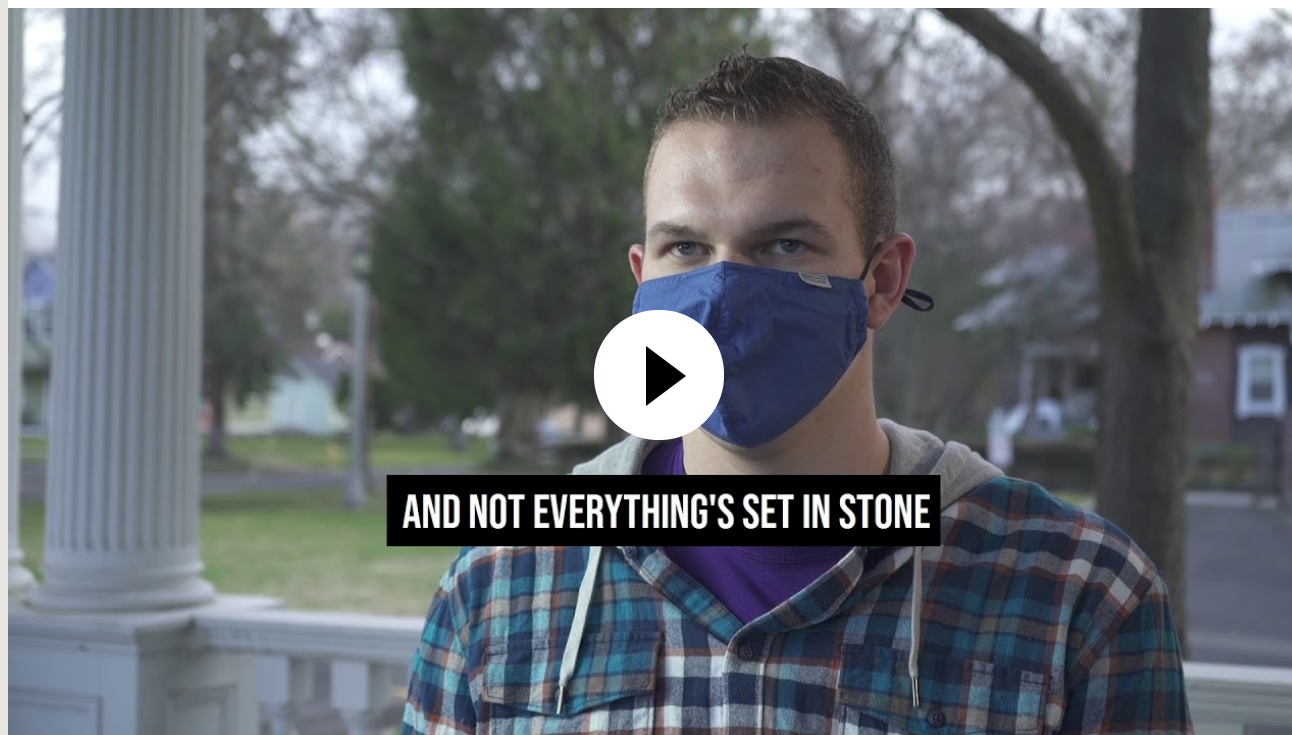




Whitman Today

Thursday, February 18, 2021

Power & Privilege Sessions Today



Today classes are cancelled and schedules rearranged so that Whitman students, staff and faculty can participate in the many sessions taking place during the Power & Privilege Symposium (P&P). Each session block includes four to five presentations:

- Session I: 9:30 a.m.–10:30 a.m.
- Session II: 10:45–11:45 a.m.
- Session III: 1:30–2:30 p.m.
- Session IV: 2:45–3:45 p.m.

The full schedule of events and meeting links are on the [P&P Schedule webpage](#). The webpage also includes information on requesting accommodations, drop-in discussion hours with the SEC and how to make appointments with therapists through the Counseling Center.

Q: Walla Walla moved to Phase 2 of the Washington State Roadmap to Recovery plan. What does that mean, practically?

A: Moving into Phase 2 primarily raises the occupancy limits on indoor dining, recreation and entertainment facilities. Additionally, there are new restrictions for personal social gatherings for people who live off-campus:

1. Indoor social gatherings with people from outside your household should not include more than five people total from no more than two households;
2. Outdoor social gatherings are limited to 15 people from outside your household, with a limit of two households.

Specific details on what is open and allowed are on the [Roadmap to Recovery website](#).

Noteworthy

Kim and Leavitt Research Recognized in Article

Papers on Asian-American Jewish families published by Professor of Sociology Helen Kim and SEC Director Noah Leavitt were noted as landmark research in an [article on a new video project](#) exploring Asian-American Jewish identities.

Submit News of a Personal or Professional Achievement

Happening Today

- all day [Power & Privilege Symposium](#)
Four hourlong sessions between 9:30 a.m. and 3:45 p.m., each with a variety of panels, presentations, discussions and workshops developed by Whitman students, staff, faculty and guest speakers.
- 7:30 p.m. [We Can't Be Illegal If We're Essential: The Reckoning Wrought by Covid-19](#)
Professor Natalia Molina will discuss why Latinx workers today, especially immigrants concentrated in frontline occupations, are considered just as expendable as they were 100 years ago—a fact that the emergence of COVID-19 has only highlighted.

Whitman Events Calendar

Have a virtual event you'd like to share with campus? Email the details to whitmantoday@whitman.edu.

"Whitman Today" is produced by the Office of Communications and is emailed Monday-Friday to Whitman College staff, faculty and students. All times are listed in Pacific Standard Time.

Submissions are welcome! If you have a professional or personal accomplishment to celebrate, an event to publicize or other content to share with the Whitman community, email whitmantoday@whitman.edu. Submissions should be 125 words or less. The deadline for submissions is noon for the following day's newsletter, though submissions may be held for a later date according to space and editorial needs.

Previous issues of Whitman Today are [archived on our website](#).

