



# Whitman Today

Wednesday, January 13, 2021

## Go Get Tested!



Day 1 of campus-wide COVID-19 testing is in the books! Yesterday 331 faculty and staff completed their first COVID tests at Cordiner Hall. Because testing went quite smoothly, we believe we can accommodate students who are already in town during today's testing slots. If you are an employee or a student already in town, please consult this schedule to find your time slot to come for COVID-19 testing today:

- [Jan. 13: Employee Testing Schedule](#)

We would strongly encourage any off-campus students to test as early as possible as we are expecting the longest lines and waits to be happening over the weekend.

As a reminder, here are the testing schedules for the remainder of the week one baseline testing:

- [Jan. 14-17: Off-Campus Students Testing Schedule](#)
- [Jan. 16 & 17: On-Campus Students Testing Schedule](#)

Please make sure to activate your Meenta account using the personalized link you received and complete the three forms in your dashboard prior to arriving for testing. If you do not, your test results may not be properly processed and you will not receive your test results. If you already activated your account but are not sure if you've completed the forms, the URL to log in and check is: <https://covid-app.meenta.io/login>.

## Announcements

### Student Printing Changes for Spring 2021

With social distancing measures in place due to the COVID-19 pandemic, WCTS staff have created a safe, reliable and efficient printing system for our students. Starting Jan. 18, the new printing system will require students to submit their print requests via an online form linked on the student tab of [my.whitman.edu](http://my.whitman.edu). Print pickups will be available at Reid Campus Center during the two-week initial quarantine according to the [alphabet-based pick-up schedule](#). Beginning Feb. 1, there will be three pickup locations around campus based on the student's last name. Print requests submitted before 1 p.m. on Monday-Friday will be ready for pickup the same day. Requests may take up to three hours to complete. WCTS will be sending out an email with more detailed information in the coming days. They look forward to fulfilling your printing needs safely and reliably throughout the spring 2021 semester.

### Apply for Beckman Scholar Science Research

Applying to be a Beckman Scholar is a multi-step process that includes selecting a faculty mentor whose research you'd like to be a part of, completing the application and participating in an interview process.

To be eligible for the Beckman Scholars Program, students must:

- be majoring in chemistry, BBMB, biology or be pre-health with a minimum 3.5 GPA
- have an intention to pursue an advanced science degree or other scientific pursuits
- be an undergraduate student (30 credits completed)
- be a U.S. citizen or permanent resident
- have commitment from one of 10 approved faculty mentors

The application deadline is Jan. 22. Visit the [Beckman Scholars webpage](#) for more information and to access the application form.

## Happening Today and Tomorrow

### TODAY

8 a.m.-2 p.m. [COVID-19 Testing](#)  
*The initial round of COVID-19 testing for employees.*

4 p.m. [An Inside look at Forecasting the COVID-19 Pandemic](#)  
*Hear from alumnus Steve McConnell '85 as he discusses data contributions to the CDC's community-based COVID-19 forecasting model, Ensemble.*

### TOMORROW

10 a.m.-3 p.m.

### [WIDE Community Learning Days](#)

The Whitman Inclusion, Diversity, and Equity (WIDE) Committee is pleased to welcome all Whitman faculty and staff to the inaugural Community Learning Days on Thursday and Friday.

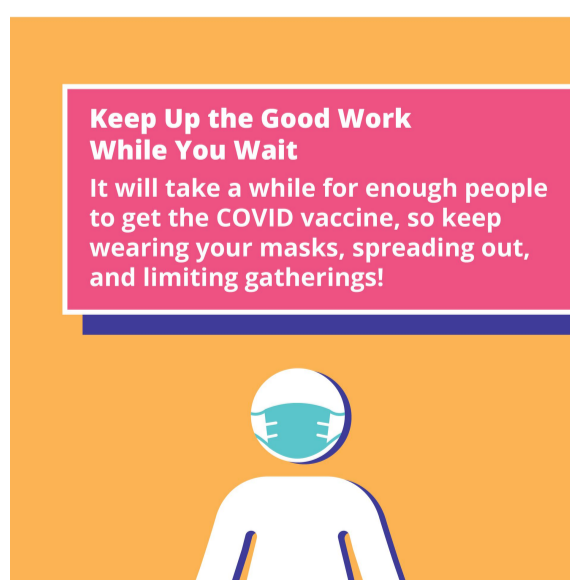
These two days of online workshops are focused on building cultural competencies through multiple discussion formats including an interdisciplinary panel and individual workshops on disability, invisible labor and LGBTQIA+ identities.



### Whitman Events Calendar

Have a virtual event you'd like to share with campus? Email the details to [whitmantoday@whitman.edu](mailto:whitmantoday@whitman.edu).

## Campus and Community Health



### COVID-19 Vaccine Distribution

Washington state is currently in Phase 1b of the [COVID-19 vaccine distribution plan](#). This means the vaccine is available to health care workers, people who live in long-term care facilities, people 70 years of age or older and people 50 years of age or older in multigenerational households.

You can determine your eligibility and sign up to receive a notice of when you may be able to receive the vaccine at [FindYourPhaseWA.org](http://FindYourPhaseWA.org).

"Whitman Today" is produced by the Office of Communications and is emailed Monday-Friday to Whitman College staff, faculty and students. All times are listed in Pacific Standard Time.

Submissions are welcome! If you have a professional or personal accomplishment to celebrate, an event to publicize or other content to share with the Whitman community, email [whitmantoday@whitman.edu](mailto:whitmantoday@whitman.edu). Submissions should be 125 words or less. The deadline for submissions is noon for the following day's newsletter, though submissions may be held for a later date according to space and editorial needs.

