



# Whitman Today

Monday, October 5, 2020

## Your Vote Matters



President Kathy Murray encourages all of us who are eligible to exercise the important right to vote in the upcoming national, state and local elections.

## Announcements

### Climbing Center Now Open

The Climbing Center will be open to in-town Whitman students for two one-hour climbing sessions per day during the fall semester. Hours: Monday-Thursday 6-8:15 p.m. and Friday-Sunday 2-4:15 p.m. Any student wishing to access the climbing center must first [complete an application](#) and wait to receive a notice of approval before being granted access to the reservation system to enter the facility. Students granted access will follow all campus health and safety procedures, including wearing a face covering, maintaining social distance and completing the Daily Wellness Check prior to entering the Climbing Center.

### Keep Zoom Updated for Security and New Features

Zoom regularly releases updates with new features and security fixes, so it's important that you regularly check for updates. If you already have the Zoom desktop client installed, make sure you're signed in, then click on your picture/icon in the upper right corner and select "check for updates." If you don't have the Zoom desktop client, are using the app on a mobile device or just want more info, [this article from Zoom](#) has more details.

## Question of the Week



This week, we're reviewing the Washington state [tips on how to celebrate a socially distanced Halloween](#), which has us thinking about costumes. What is your favorite costume from Halloween's past? (Bonus points if you have a photo to share!)

[Tell Us About Your Favorite Costume](#)

## Happening This Week

THURSDAY, OCT. 8

- 4 p.m. [Omitted: A look at the hard history that we weren't taught in school and why](#)  
*Whitman Teaches the Movement will host a panel of speakers who will discuss the impacts of gaps in our K-12 history curriculum regarding Black history in the U.S.*
- 6 p.m. [Voting Matters Viewing and Discussion](#)  
*Watch this documentary on voting rights and join a discussion hosted by the Whitman Chapter of Every Vote Counts.*
- 7 p.m. [Whitman Votes Webinar](#)  
*Learn about the history of voting rights and gain practical resources and skills to help you become a voting rights activist.*

[More Upcoming Events](#)

Have a virtual event you'd like to share with campus? Email the details to [whitmantoday@whitman.edu](mailto:whitmantoday@whitman.edu).

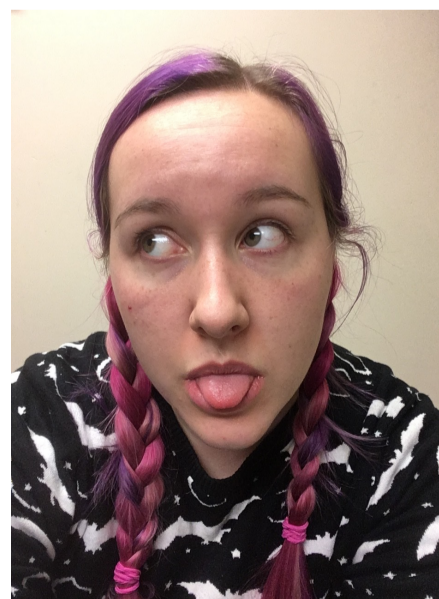
## Getting to Know...

CHARLOTTE NICHOLSON '22  
(she/her)

Major: biology

Extracurricular activities: [Tabletop Games Club](#), [Women's Rugby](#), embroidery, D&D/other RPGs

What is your favorite aspect of the Whitman community? My favorite aspect of the Whitman community is how open everyone is! Even with online classes, I've found it pretty easy to make small connections with people, even if it's just you both admitting that you don't fully understand what's going on or chatting in breakout rooms on Zoom. Everyone's always looking to make connections and meet new people.



Why are you part of Tabletop Games Club? I first joined Tabletop as a brand-new first year because I enjoyed playing board games with my family and I wanted to try to find some RPG groups to play with, and then, before I had even gone to my first game night, I volunteered to be on the leadership team! It was one of the best choices I've made at Whitman. I love that Tabletop is an alcohol-free social space on weekend evenings, I love how many other queer people show up to game nights, I love that there's no pressure to be there every weekend, and I love how much fun it is. Everyone's always willing to teach games to people who don't know how to play, and as serious as things can get in-game, there's always a big round of "oh my goodness you played so well" after the game is over.

"Whitman Today" is produced by the Office of Communications and is emailed Monday-Friday to Whitman College staff, faculty and students. All times are listed in Pacific Daylight Time.

Submissions are welcome! If you have a professional or personal accomplishment to celebrate, an event to publicize or other content to share with the Whitman community, email [whitmantoday@whitman.edu](mailto:whitmantoday@whitman.edu). Submissions should be 125 words or less. The deadline for submissions is noon for the following day's newsletter, though submissions may be held for a later date according to space and editorial needs.

